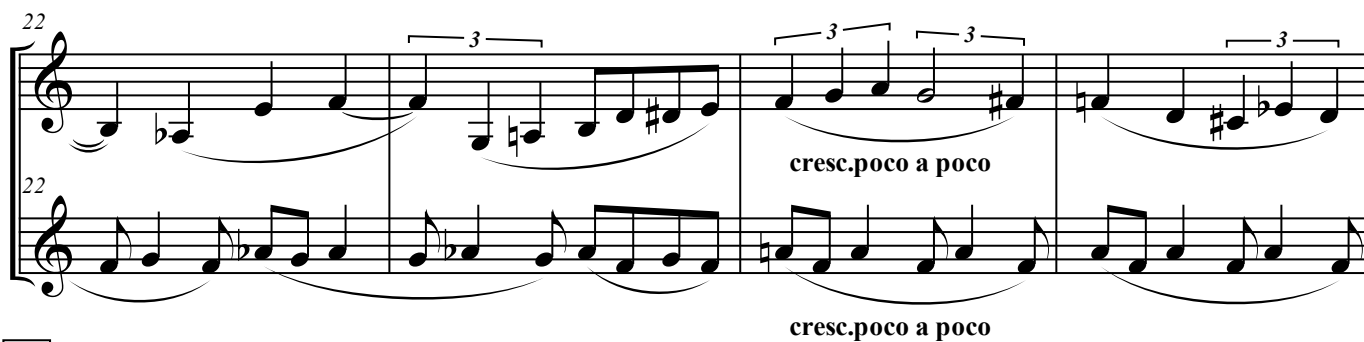
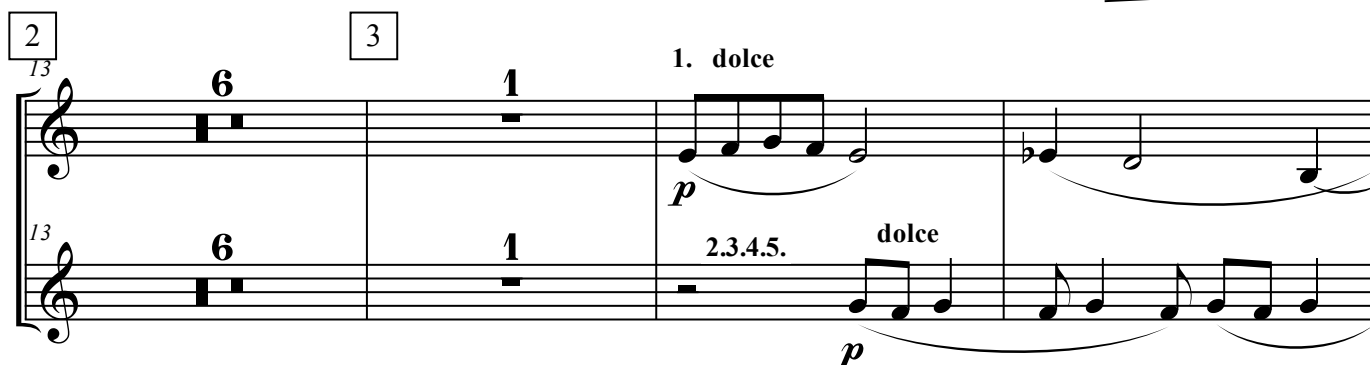
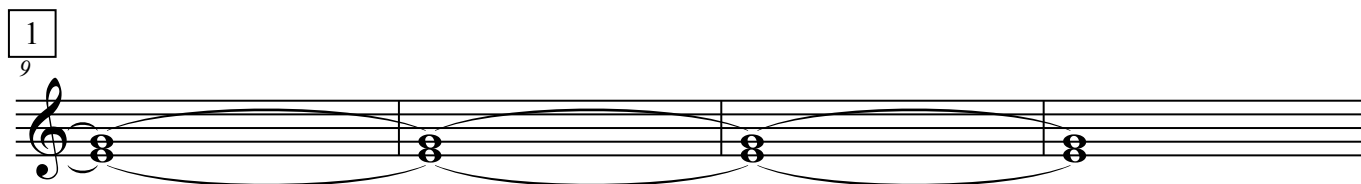
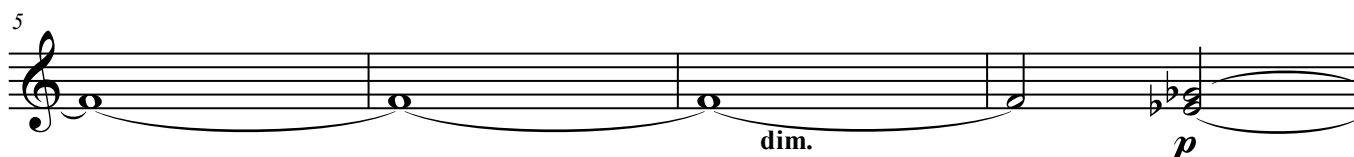
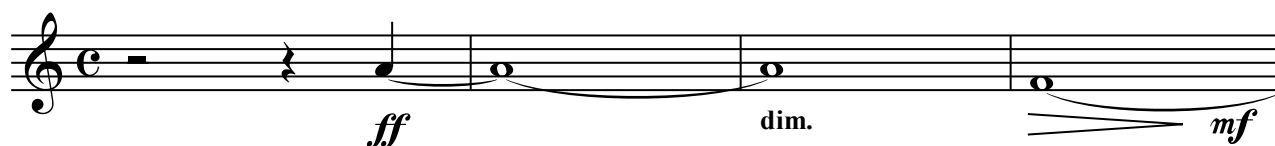


## Violini II

Посвящение  
для камерного оркестра

А.С.Караманов

Moderato (♩ = 85)



30

5

*ff*

*ff*

34

34

38

6

1

1

*ff*

*ff*

42

42

4

4

7

47

*accelerando poco a poco*

10

11

10

11

8

9 *poco piu mosso*

68 1.2. pizz. *mf*

68 8<sup>va</sup> 3.4.5. pizz. *mf*

70

70

72

72

74

74

10

76

76

78

Two staves of music in G-flat major (three flats). Measure 78: Treble staff has a whole rest, then an eighth rest followed by an eighth note G4, quarter note A4, and quarter note Bb4. Bass staff has a whole rest, then an eighth rest followed by an eighth note G3, quarter note A3, and quarter note Bb3. Measure 79: Treble staff has an eighth rest followed by eighth notes G4, A4, Bb4, and A4. Bass staff has an eighth rest followed by eighth notes G3, A3, Bb3, and A3.

80

Two staves of music. Measure 80: Treble staff has an eighth rest followed by eighth notes G4, A4, Bb4, and A4. Bass staff has an eighth rest followed by eighth notes G3, A3, Bb3, and A3. Measure 81: Treble staff has an eighth rest followed by eighth notes G4, A4, Bb4, and A4. Bass staff has an eighth rest followed by eighth notes G3, A3, Bb3, and A3.

82

loco

Two staves of music. Measure 82: Treble staff has an eighth rest followed by eighth notes G4, A4, Bb4, and A4. Bass staff has an eighth rest followed by eighth notes G3, A3, Bb3, and A3. Measure 83: Treble staff has an eighth rest followed by eighth notes G4, A4, Bb4, and A4. Bass staff has an eighth rest followed by eighth notes G3, A3, Bb3, and A3. The word "loco" is written above the treble staff and below the bass staff.

84

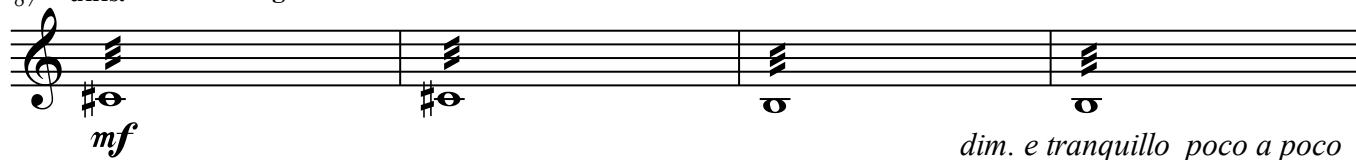
2

Two staves of music. Measure 84: Treble staff has an eighth rest followed by eighth notes G4, A4, Bb4, and A4. Bass staff has an eighth rest followed by eighth notes G3, A3, Bb3, and A3. Measure 85: Treble staff has a whole rest with a "2" above it. Bass staff has a whole rest with a "2" above it. The system ends with a double bar line and a repeat sign.

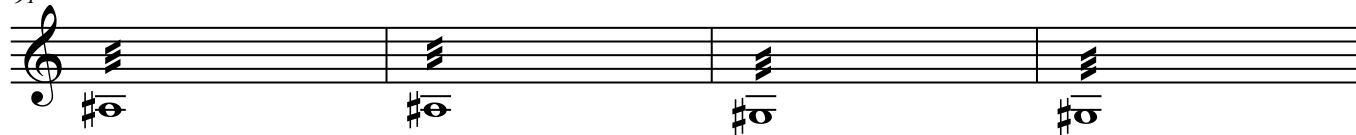
11

87

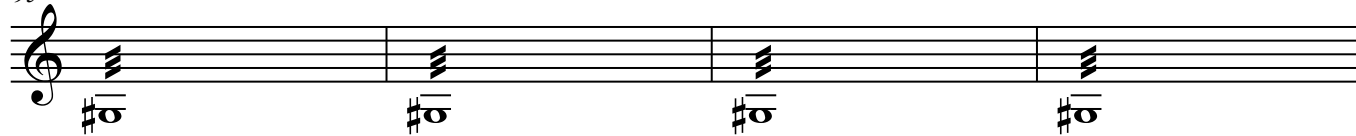
unis. arco agitato



91

*rit. poco a poco*

95



13

Tempo I (Moderato assai)

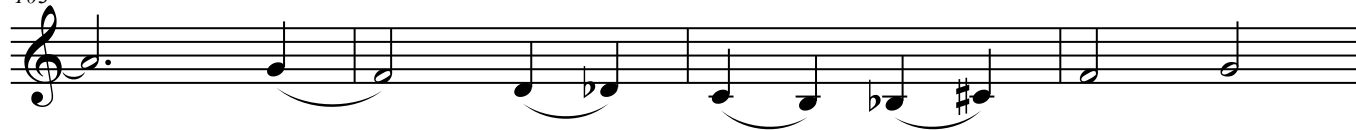
99

espress.molto



14

103



107



15

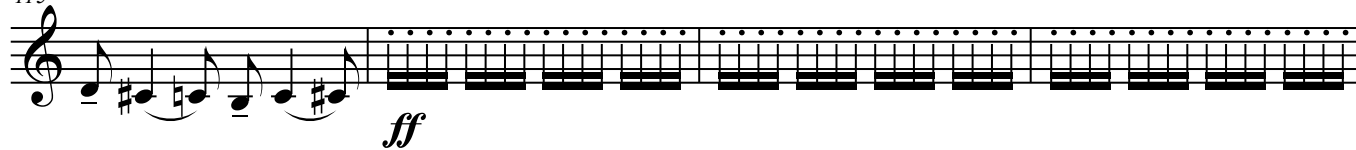
111



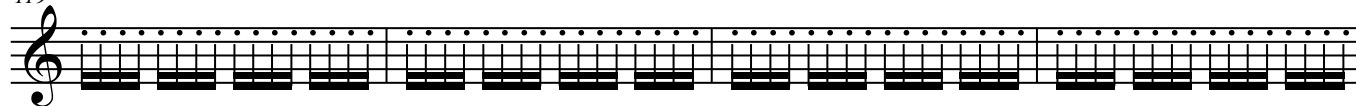
16

смычком по деке

115



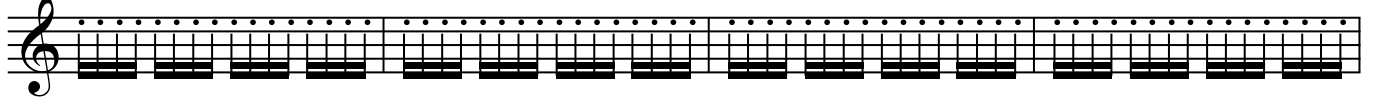
119



6

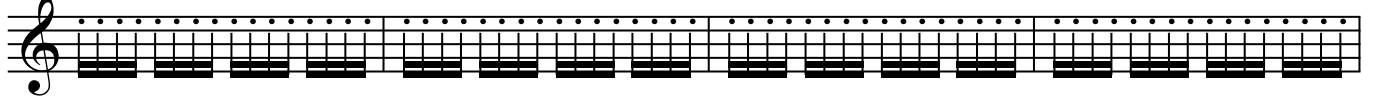
17

123



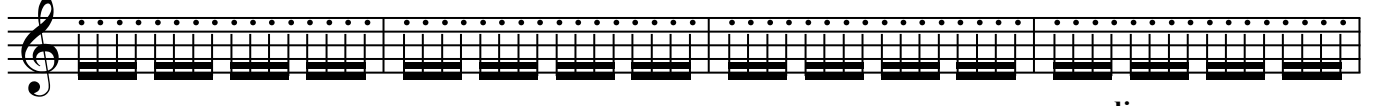
18

127



19

131



dim.poco a poco

135



dim.poco a poco

*p*

20

139



9

21  
148 arco  
*mf*

151

22  
154

157

23  
160

163

*accelerando poco a poco*

166

24  
169 *Poco piu mosso*  
*pizz.*  
*f* *cresc.*

172

Detailed description: The image shows a page of a musical score, page 7. It contains eight staves of music. The first staff (measures 148-150) is marked 'arco' and 'mf'. The second staff (measures 151-153) continues the pattern. The third staff (measures 154-156) is marked with a box containing '22'. The fourth staff (measures 157-159) continues. The fifth staff (measures 160-162) is marked with a box containing '23'. The sixth staff (measures 163-165) is marked 'accelerando poco a poco'. The seventh staff (measures 166-171) starts with a double bar line and a key signature change to F major (two flats). It is marked 'Poco piu mosso', 'pizz.', and 'f'. The eighth staff (measures 172) continues the pattern. A 'cresc.' marking is placed above the eighth staff. The page number '7' is in the top right corner.

25

175.



178.



26

181



184



187



27

**Tempo I (Moderato assai)**

190



192 *sul pont. arco*

192-196: Treble clef, key of D major. Measures 192-196 contain a melodic line starting with a whole rest, followed by a half note D4, a half note E4, a half note F#4, a half note G4, and a half note A4. The dynamics are *pp*.

28

197

197-200: Treble clef, key of D major. Measures 197-200 contain a melodic line starting with a half note B4, a half note C5, a half note D5, a half note E5, and a half note F#5. The dynamics are *ff*.

200

200-203: Treble clef, key of D major. Measures 200-203 contain a melodic line starting with a whole note D4, a whole note E4, a whole note F#4, and a whole note G4. The dynamics are *dim.* and *mf*.

29

203

203-206: Treble clef, key of D major. Measures 203-206 contain a melodic line starting with a whole note D4, a whole note E4, a whole note F#4, and a whole note G4. The dynamics are *dim.* and *p* 4.5.

206

206-209: Treble clef, key of D major. Measures 206-209 contain a melodic line starting with a whole note D4, a whole note E4, a whole note F#4, and a whole note G4. The dynamics are *dim.*

30

209 *dolce*

209-213: Treble clef, key of D major. Measures 209-213 contain a melodic line starting with a half note D4, a half note E4, a half note F#4, a half note G4, a half note A4, a half note B4, a half note C5, a half note D5, a half note E5, a half note F#5, a half note G5, and a half note A5. The dynamics are *p*.

213

213-217: Treble clef, key of D major. Measures 213-217 contain a melodic line starting with a half note D4, a half note E4, a half note F#4, a half note G4, a half note A4, a half note B4, a half note C5, a half note D5, a half note E5, a half note F#5, a half note G5, and a half note A5. The dynamics are *p*.

31

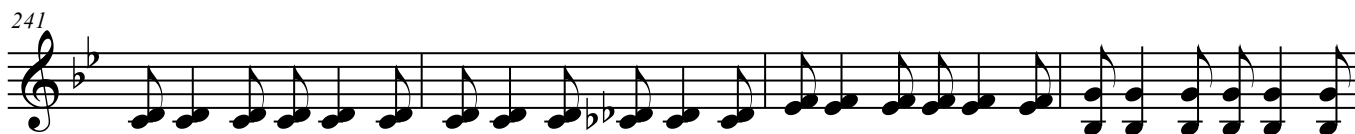
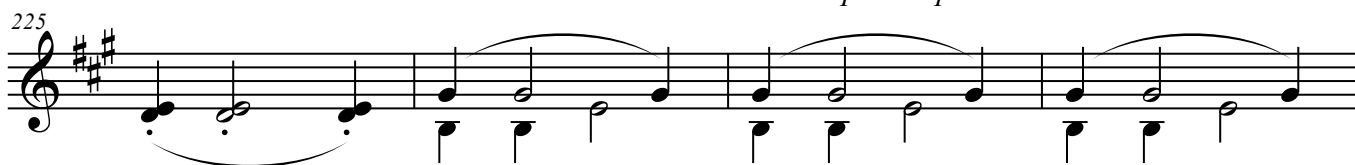
217

217-221: Treble clef, key of D major. Measures 217-221 contain a melodic line starting with a half note D4, a half note E4, a half note F#4, a half note G4, a half note A4, a half note B4, a half note C5, a half note D5, a half note E5, a half note F#5, a half note G5, and a half note A5. The dynamics are *p*.

32

221

221-225: Treble clef, key of D major. Measures 221-225 contain a melodic line starting with a half note D4, a half note E4, a half note F#4, a half note G4, a half note A4, a half note B4, a half note C5, a half note D5, a half note E5, a half note F#5, a half note G5, and a half note A5. The dynamics are *p*.

*cresc. poco a poco**accelerando poco a poco**cresc.*

39 **Piu mosso (Allegretto)**



40



41



42



43



44

